

# ACTIVITY GUIDE

# 4-H EXPLORATION DAYS

JUNE 19-21, 2024  
MICHIGAN 4-H YOUTH DEVELOPMENT  
MICHIGAN STATE UNIVERSITY



**YOU'VE FOUND YOUR PLACE  
NOW LET'S GROW!**



MICHIGAN 4-H EXPLORATION DAYS 2024

# CONTENTS & WELCOME

## Contents

<b>Schedule</b> .....	<b>1</b>
<b>Keynote: Shannon McKain</b> .....	<b>2</b>
<b>More Cool Things to See &amp; Do at MSU During Free Time</b> .....	<b>3</b>
<b>Use the 4-H Exploration Days App</b> .....	<b>9</b>
<b>MSU Campus Map</b> .....	<b>10</b>
<b>Finding Your Sessions</b> .....	<b>12</b>
<b>Shuttle Bus Schedule</b> .....	<b>12</b>
<b>Campus Buildings &amp; Features We Use Map Index</b> .....	<b>13</b>
<b>A Sessions</b> .....	<b>14</b>
<b>B Sessions</b> .....	<b>15</b>
<b>C Sessions</b> .....	<b>17</b>
<b>D Sessions</b> .....	<b>17</b>
<b>General Information</b> .....	<b>19</b>
<b>Emergency Procedures</b> .....	<b>21</b>

## Welcome

Welcome to 4-H Exploration Days 2024, we're glad you're here! Have fun and learn as much as you can during the event. When you return home, apply what you've learned and share it with others. Please enjoy your stay and all that 4-H has to offer.



### Green Group? White Group? How Can I Tell?

Some activities during 4-H Exploration Days have different starting times for the Green Group and the White Group. The name tag you received when you checked in indicates which group you're in.

Go GREEN! Go WHITE! Go SPARTANS!

# SCHEDULE

Look for the shuttle bus schedule on the “Finding Your Sessions” page.

## WEDNESDAY, JUNE 19

**7–8:15 a.m.**

Breakfast for Tuesday Early Arrivals,  
*Akers Hall Cafeteria*

**8–9 a.m.**

Chaperone Check-In, *West Holmes Lobby*

**9–11 a.m.**

Youth Check-In With County  
Chaperones, *East & West Holmes Lobbies*

**10:15 a.m.–Noon**

Half-Hour County Meetings (*see signs on housing floors for county time & location*)

**11:30 a.m.–1:30 p.m.**

Lunch (**Green Group** starts at 11:30 a.m., **White Group** starts at 12:15 p.m.), *Akers Hall Cafeteria*

**1:45–3 p.m.**

Team Unity Activity & Rides to Munn Ice Arena, *Various Locations (signs in Holmes Hall & on YAPP app list gathering points)*

**3:30–5 p.m.**

Kickoff Event—Keynote Speaker & Welcome, *Munn Ice Arena*

**5–5:30 p.m.**

State 4-H Awards Celebration,  
*Munn Ice Arena*

**5:30–6 p.m.**

Youth–Chaperone Reflect & Plan Meetings (**White Group**), *On Assigned Floors*

**5:30–7 p.m.**

Dinner (**Green Group** starts at 5:30 p.m., **White Group** starts at 6 p.m.), *Akers Hall Cafeteria*

**6:30–7 p.m.**

Youth–Chaperone Reflect & Plan Meetings (**Green Group**), *On Assigned Floors*

**7–9:45 p.m.**

Free Time Activities

**10 p.m.**

Participants & Adults in Holmes Hall

**10:15 p.m.**

Holmes Hall Doors Locked

**10:15–11 p.m.**

Youth–Chaperone Debrief,  
*On Assigned Floors*

**11 p.m.**

Participants in Assigned Rooms

**Midnight**

Quiet in the Residence Hall

## THURSDAY, JUNE 20

**7–8:15 a.m.**

Breakfast, *Akers Hall Cafeteria*

**8:30–11:30 a.m.**

A Sessions

**8:30–11:30 a.m.**

C Sessions

**11:30 a.m.–1:30 p.m.**

Lunch (**Green Group** 11:30 a.m.–12:15 p.m., **White Group** 12:15–1:30 p.m.), *Akers Hall Cafeteria*

**1:30–4:30 p.m.**

B Sessions

**1:30–4:30 p.m.**

C Sessions

**5:30–6 p.m.**

Youth–Chaperone Reflect & Plan Meetings (**White Group**), *On Assigned Floors*

**5:30–7 p.m.**

Dinner (**Green Group** starts at 5:30 p.m., **White Group** starts at 6 p.m.), *Akers Hall Cafeteria*

# SCHEDULE (continued)

## 6:30–7 p.m.

Youth–Chaperone Reflect & Plan Meetings  
(**Green Group**), *On Assigned Floors*

## 7–9:45 p.m.

Free Time Activities: Dance, Ice Skating,  
Movie: *Home*, & More (*Check Free Time  
Activities lists for details*)

## 10 p.m.

Participants & Adults in Holmes Hall

## 10:15 p.m.

Holmes Hall Doors Locked

## 10:15–11 p.m.

Youth–Chaperone Debrief, *On Assigned  
Floors*

## 11 p.m.

Participants in Assigned Rooms

## Midnight

Quiet in the Residence Hall

## FRIDAY, JUNE 21

## 6:30–8:15 a.m.

Pack Up Housing Room

## 7–8:15 a.m.

Breakfast, *Akers Hall Cafeteria*

## 8:30–11 a.m.

D Sessions

## 11:30 a.m.–1 p.m.

Check-Out With Lead Chaperone

## 11:30 a.m.–1 p.m.

Lunch, *Akers Hall Cafeteria*

## 2 p.m.

Holmes Hall Doors Locked

## KEYNOTE: Shannon McKain

### Wednesday, 3:30–5 p.m.

#### Munn Ice Arena

Shannon McKain is a motivational speaker and former NFL cheerleader who is regularly seen on ABC, CBS, NBC, and Nickelodeon. With her on- and off-field experience, McKain has a unique advantage helping audiences explore how to build bridges rather than barriers. She earned a bachelor's degree in communications and political science from William Jewell College, is a proud 4-H alum, once lived on a canoe in the Florida Everglades, and has kayaked in the world's longest nonstop river race—traveling 340 miles on the Missouri River in under 85 hours. Find out from McKain how to live your best, most authentic life.

**Name badge required.**



# MORE COOL THINGS TO SEE & DO AT MSU DURING FREE TIME

**You must wear your name badge**  
for these Wednesday and Thursday  
afternoon and evening activities!

## WEDNESDAY FREE TIME ACTIVITIES

### Clover Olympics

**Wed.: 7–9:30 p.m.**

**IM East Field (rain backup: Akers Hall,  
Rm. C134)**

Build your team! Accept the challenge!  
Join us for the Clover Olympics! Flex  
your mental and physical strength as  
you participate in timed relays to take  
home the Clover Trophy and other fun  
prizes! You'll compete on four-person  
teams with members from one or more  
counties. Bring a team you've put  
together or be assigned to a team when

### 4-H EXPLORATION DAYS GOOSECHASE CHALLENGE 2024

**Opens June 14 at 9 a.m., closes  
June 20 at 9 p.m.; prizes awarded  
June 21**

Test your knowledge by completing  
health- and science-related  
missions! Use your phone to  
compete with friends by sharing  
photos, exploring campus, and  
completing challenges before  
time runs out. Download the free  
Goosechase mobile app and use  
the game code **ED91BW**. Open to  
all youth participants.

*Free*

you arrive for the games. New this year,  
prizes will be awarded after each round  
of games. Don't miss out as we race to  
the finish line!

*Free*

### Cootie Catchers

**Wed.: 7–9:30 p.m.**

**Holmes Hall, Rm. W5**

Relax while you cut, color, and fold your  
own mindful cootie catcher.

*Free*

### Diamond Art

**Wed. & Thu.: 7–9:30 p.m.**

**Holmes Hall, Rm. W9**

Create your own glittery design as  
you learn the process of painting by  
numbers . . . using glitter diamonds.

*Free*

### Games & Crafts Around the World

**Wed.: 7–9:30 p.m.**

**Akers Hall, Rm. C133**

Play and learn more about games from  
around the world. Make and learn about  
crafts associated with cultural and  
seasonal festivals and celebrations.

*Free*

### Gardens

**Wed.: 8:30–9:30 p.m.**

**& Thu.: 7–9:30 p.m.**

**W. J. Beal Botanical Garden**

(be on the last shuttle bus by 9:30 p.m.  
on Wednesday & Thursday)

**MSU Horticulture Gardens**

(home of the Michigan 4-H Children's  
Gardens)

*Free*

## Healthy Communication & Helping Skills Workshop

**Wed. & Thu.: 7–9:30 p.m.**

**Holmes Hall, Rm. C101**

Learn about healthy communication skills and basic skills related to careers in helping fields like clinical mental health, including validation, reflection, and processing questions.

*Free*

### MINDFUL MINUTES ROOM

**Wed.: Open 10 a.m.–1 p.m. & during free time until 8 p.m.**

**Thu.: Open before & after sessions & during free time until 8 p.m.**

**West Holmes Hall, Spartan Room (connected to cafeteria)**

If the excitement of 4-H Exploration Days starts to feel like it's a bit too much, visit the Mindful Minutes Room to ground yourself and relax. Take part in mindful activities such as meditation, yoga, journaling, and coloring, or just be quiet while collecting your thoughts. This room is not a session or an alternative to a session but a place to help you decompress and reset before the next activity. A staff member will be there to give instructions and offer support.

*Free*

## Helping With Rainbow Hands Hangout Zone

**Wed. & Thu.: 7 p.m.–9:30 p.m.**

**In front of East Holmes Hall (rain backup: Holmes Hall, Rm. C103)**

Are you a part of the LGBTQIA+ community or an ally? Come hang out with the teens from the 4-H Helping With Rainbow Hands Club! Spend some time getting to know teens from around

the state and learn more about the club. The hangout zone will have games, sidewalk chalk, and other activities.

*Free*

## Michigan 4-H Children's Gardens

**Wed.: 8:30–9:30 p.m.**

**& Thu.: 7–9:30 p.m.**

The Michigan 4-H Children's Gardens are part of the MSU Horticulture Gardens. Kids and adults of all ages, from all around the world, have enjoyed the range of things to see and do in the many themed gardens!

*Free*

## Miniature Golf

**Ongoing**

**In front of East Holmes Hall**

Miniature golf is a great way to pass the time, anytime, so join us for nine holes! Check out and return clubs at 4-H Exploration Days Headquarters in the West Holmes Hall Lounge.

*Free*

## MSU Dairy Store

**Anthony Hall, Rm. 1140**

**Wed. ONLY: 6–9 p.m. MSU Dairy Store Carts—Outside West Holmes Hall**

**Wed.–Fri. Store Hrs: Noon–8 p.m.**

**Wed.–Thu. Observation Deck Hrs: 3:30–5 p.m. (follow signs from store entrance)**

The MSU Dairy Store makes delicious ice cream just for you! Take a self-guided tour on the Anthony Hall observation deck with videos of how MSU makes cheese and ice cream. On Wednesday evening ONLY, the MSU Dairy Store Carts bring you ice cream just outside West Holmes Hall!

*Pick up a Wednesday-only coupon from your chaperone for one free scoop from the Dairy Store Carts. The MSU Dairy Store is a cashless, card-only operation.*

## Pizza

**Wed. & Thu.: 8:30–10 p.m.**

### Outside Holmes Hall

Cottage Inn Pizza will be outside Holmes Hall to sell:

- Six-slice medium pepperoni-and-cheese and cheese-only pizzas for \$6 each
- 12 pieces of garlic cheese bread for \$6 each

You can order other menu items from Cottage Inn Pizza (517-324-4300), Domino's Pizza (517-351-7100), or other food vendors that offer on-campus delivery. If you don't have a phone, call in your order from the Holmes Hall front desk phone. The standard tip for pizza delivery is \$3 a pizza. Place orders by 9:30 p.m.

## Salsa & Bachata Dancing

**Wed.: 7–9:30 p.m.**

### IM Sports East, Multipurpose Rms. A & B

Have fun learning some basic salsa and bachata dance moves. You don't need to bring a partner but wear shoes with soles that will let you slide a bit (not flip flops and probably not most everyday sandals).

*Free*

## Souvenir Shopping

**Wed. & Thu.: 10 a.m.–5 p.m.**

### Spartan Bookstore, International Center & Spartan Spirit Shop, MSU Union

Wear your name badge to enjoy 20% off regular priced clothing and souvenirs at the Spartan Spirit Shop in the MSU Union.

## Sparty Convenience Store

**Wed. & Thu.: 7 a.m.–10 p.m.,**

**Fri.: 7 a.m.–1 p.m.**

### West Holmes Hall, Café Area

Buy magazines, toothbrushes, and more.

## Sports Facilities—Indoors

**Wed.: 1–6 p.m. & 8:30–9:45 p.m.**

**& Thu.: 4:30–9:45 p.m.**

### IM Sports East—Open Recreation

- Racquetball
- Table tennis
- Basketball courts

Show your name badge and room key at the service counter to check out equipment.

*Free*

## Sports Facilities—Outdoors

**Wed.: 1–6 p.m. & 8:30–9:45 p.m.**

**& Thu.: 4:30–9:45 p.m.**

### IM East Field

- Sand volleyball courts
- Basketball courts
- Soccer

Show your name badge and room key to check out equipment from the IM Sports East service counter.

*Free*

## Staying Safe on the Farm

**Wed. & Thu.: 7–9:30 p.m.**

### Akers Hall, Rm. C135

Drop in for a series of interactive demonstrations on staying safe while working on agriculture-related tasks.

*Free*

## Stick-It: Archery Fun!

**Wed. & Thu.: 7–9:30 p.m.**

### Outside West Holmes Hall

Whether you're an experienced archer or new to the sport, join us and aim for fun, friends, and fellowship! All equipment will be provided. Grab a friend and come fling some sticks (arrows)!

*Free*

## Uno Card Tournament

**Wed.: 7–9:30 p.m.**

### Holmes Hall, Rm. C104

Are you the best Uno card player in Michigan 4-H? Bring your friends and your best Uno skills to play 4-H'ers from across the state in an intense Uno battle.

*Free*

## Upcycled Crafting

**Wed.: 7–9:30 p.m.**

**McDonel Hall, Rm. B42**

Use household materials to make cute crafts. Fold a washcloth into a teddy bear or upcycle a T-shirt into a Hawaiian lei. (Washcloths and T-shirts will be provided.)

*Free*

## Yard Games & Sports Equipment

**Wed.: 1–6 p.m. & Thu.: 4:30–9:30 p.m.**

**Check out items at 4-H Exploration  
Days Headquarters in West Holmes  
Hall Lounge**

Use your name badge to check out yard games and sports equipment:

- Basketballs
- Big Jenga tumbling timber towers
- Bocce ball set
- Cornhole game
- Croquet set
- Footballs
- Frisbee flying discs
- Miniature golf equipment
- Soccer balls
- Volleyballs (nets set up outside hall)
- Yard Yahtzee dice games

*Free*

## Your Friendly Neighborhood Bats

**Wed. & Thu.: 7–9:30 p.m.**

**Meet in East Lobby of Holmes Hall  
(rain backup: Holmes Hall, Rm. E182,  
East Lounge)**

Come learn about the bats that live on the MSU campus! Bats might be a little odd looking, but they help pollinate many crops and do a lot of insect control. Come color a bat mask, make a bat ornament, answer bat trivia questions for prizes, and maybe catch a glimpse of the local bats on our bat monitoring equipment.

*Free*

---

## THURSDAY FREE TIME ACTIVITIES

---

### Dance

**Thu.: 7–9:30 p.m.**

**IM Sports East, East Gym**

*Free*

### Diamond Art

**Wed. & Thu.: 7–9:30 p.m.**

**Holmes Hall, Rm. W9**

*Details in Wednesday free time entry.*

### Gardens

**Wed.: 8:30–9:30 p.m.**

**& Thu.: 7–9:30 p.m.**

**W. J. Beal Botanical Garden**

**MSU Horticulture Gardens**

*Details in Wednesday free time entry.*

### Helping With Rainbow Hands Hangout Zone

**Wed. & Thu.: 7–9:30 p.m.**

**In front of East Holmes Hall (rain  
backup: Holmes Hall, Rm. C103)**

*Details in Wednesday free time entry.*

### Ice Skating

**Thu.: 7–9:30 p.m.**

**Munn Ice Arena**

*Skating \$4; \$3 skate rental or bring your own.*

### Michigan 4-H Children's Garden

**Wed.: 8:30–9:30 p.m. & Thu.: 7–9:30 p.m.**

*Details in Wednesday free time entry.*

### Miniature Golf

**Ongoing**

**In front of East Holmes Hall**

*Details in Wednesday free time entry.*

### Movie: *Home*

**Thu.: 7 p.m.**

**Holmes Hall, Rm. C106 (Auditorium)**

When Oh, a loveable misfit from another planet, finds himself on the run from his own people, he forms an



unlikely friendship with the adventurous Tip, who is on a quest of her own.

*Free*

## **MSU Dairy Store**

**Anthony Hall, Rm. 1140**

**Wed.–Fri. Store Hrs: Noon–8 p.m.**

**Wed.–Thu. Observation Deck Hrs:  
3:30–5 p.m. (follow signs from store  
entrance)**

*Details in Wednesday free time entry.*

## **MSU Food Science & Human Nutrition Undergraduate Majors**

**Wed.: 7–9:30 p.m.**

**Meet outside West Holmes entrance  
& walk over with guide**

Ever wanted to work in the food industry, in medicine, in public health, or with athletes? Tour the MSU Department of Food Science and Human Nutrition and learn about food science, dietetics, and nutritional sciences majors. (Be sure to visit <https://www.canr.msu.edu/fshn/>, too!)

*Free*

## **Paper Crafts**

**Thu.: 7–9:30 p.m.**

**McDonel Hall, Rm. B42**

Enjoy an evening learning unique paper-fold crafts like Scandinavian stars and woven heart baskets.

*Free*

## **Pizza**

**Wed. & Thu.: 8:30–10 p.m.**

**Outside Holmes Hall**

*Details in Wednesday free time entry.*

## **Roller Skating**

**Thu.: 7–9:30 p.m.**

**IM Sports East, East Gym**

Show us your fanciest roller skating moves or learn some new ones! Bring your own skates (no Rollerblades or other inline skates) or use ours.

*Free*

## **Souvenir Shopping**

**Wed. & Thu.: 10 a.m.–5 p.m.**

**Spartan Bookstore, International Center  
& Spartan Spirit Shop, MSU Union**

*Details in Wednesday free time entry.*

## **Sparty Convenience Store**

**Wed. & Thu.: 7 a.m.–10 p.m.,**

**Fri.: 7 a.m.–1 p.m.**

**West Holmes Hall, Café Area**

*Details in Wednesday free time entry.*

## **Sports Facilities—Indoors**

**Wed.: 1–6 p.m. & 8:30–9:45 p.m.**

**& Thu.: 4:30–9:45 p.m.**

**IM Sports East—Open Recreation**

*Details in Wednesday free time entry.*

## **Sports Facilities—Outdoors**

**Wed.: 1–6 p.m. & 8:30–9:45 p.m.**

**& Thu.: 4:30–9:45 p.m.**

**IM East Field**

*Details in Wednesday free time entry.*

## **Staying Safe on the Farm**

**Wed. & Thu.: 7–9:30 p.m.**

**Akers Hall, Rm. C135**

*Details in Wednesday free time entry.*

## **Stick-It: Archery Fun!**

**Wed. & Thu.: 7–9:30 p.m.**

**Outside West Holmes Hall**

*Details in Wednesday free time entry.*

## **SYLC Game Night**

**Thu.: 7–9:30 p.m.**

**Outside Akers Hall (rain backup: Akers  
Hall, Rm. C138)**

Join the Michigan 4-H State Youth Leadership Council, or SYLC, ambassadors for an exciting game night full of interactive games! Learn more about being a 4-H ambassador, have some fun, get to know current 4-H ambassadors, and learn how to get involved!

*Free*

## Twisted Team Trivia

**Thu.: 7–9:30 p.m.**

**Holmes Hall, Rm. C102**

This trivia challenge has something for everyone—we'll cover all the bases, soar to new heights, and pull out all the stops! We might test your knowledge of baseball, military sites, birds, or road signs. Maybe we'll find out what you know about movies and MSU, 4-H and music, sports, or art. We could ask about anything and everything! Space is limited.

*Free*

## Yard Games & Sports

### Equipment

**Wed.: 1–6 p.m. & Thu.: 4:30–9:30 p.m.**

**Check out items at 4-H Exploration Days Headquarters in West Holmes Hall Lounge**

*Details in Wednesday free time entry.*

### Your Friendly Neighborhood Bats

**Wed. & Thu.: 7–9:30 p.m.**

**Meet in East Lobby of Holmes Hall (rain backup: Holmes Hall, Rm. E182, East Lounge)**

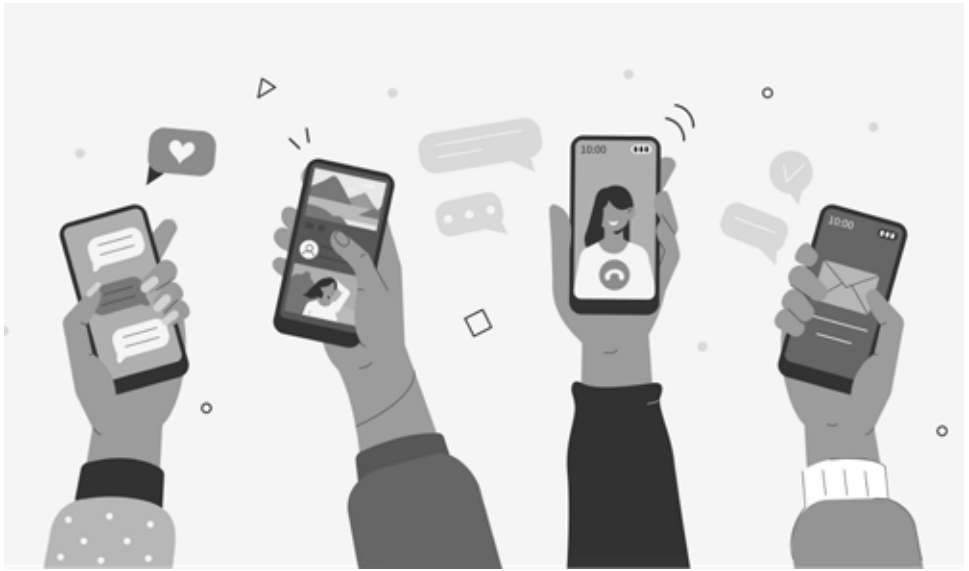
*Details in Wednesday free time entry.*

## Summer 2024 Campus Road Construction Alert

Farm Lane is closed over the Red Cedar River this summer for bridge reconstruction. Street and sidewalk closures caused by other road construction and building projects will shift often as work progresses. For the latest on getting around campus, see the interactive Closures and Detours map at <https://apps.gis.msu.edu/construction/closures-and-detours/>.



# USE THE 4-H EXPLORATION DAYS APP



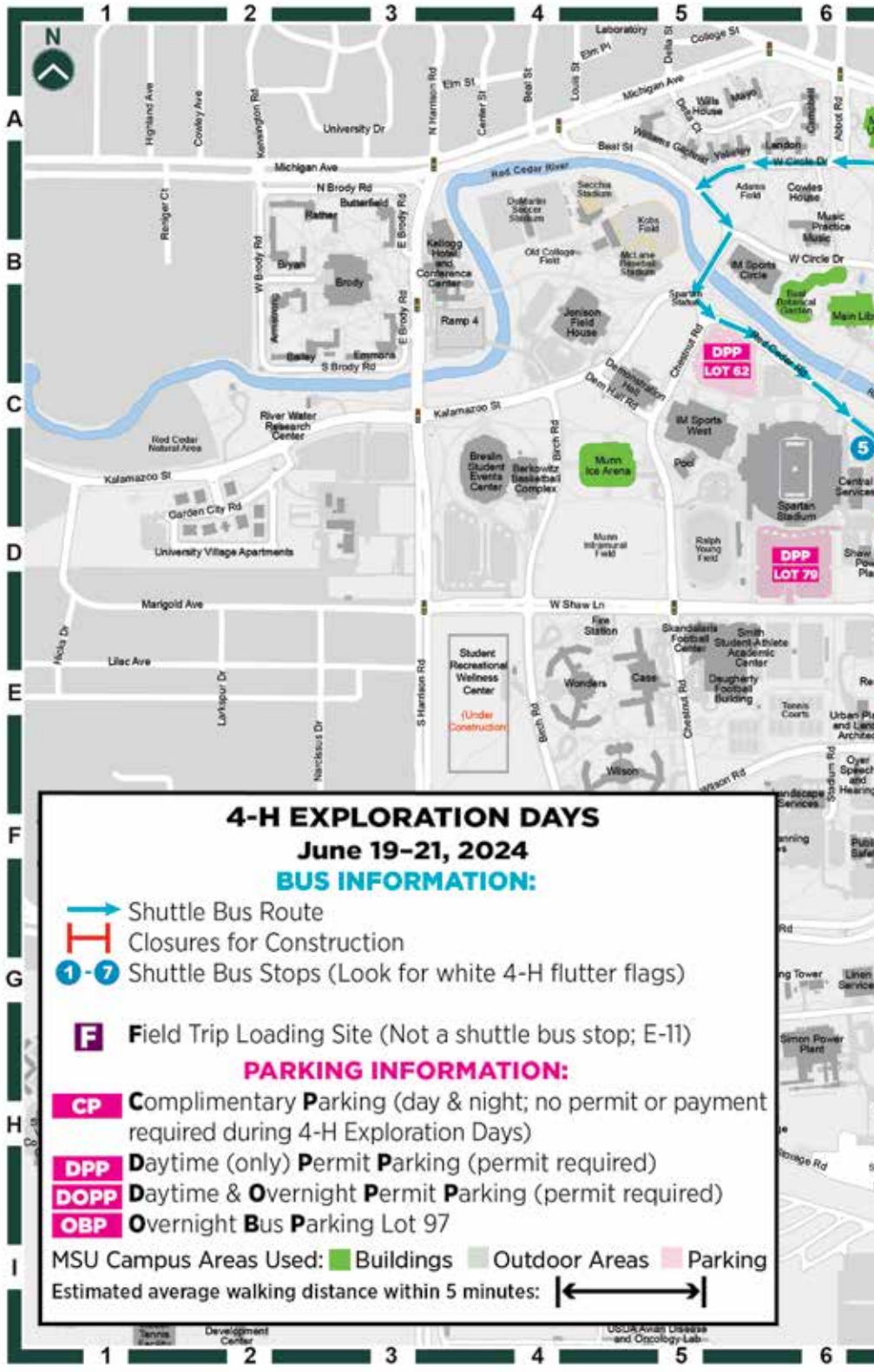
If you have an internet-connected mobile device (such as a smartphone or tablet), you can replace your printed *2024 4-H Exploration Days Activity Guide* with the event app. The app works on Android and iOS devices.

1. Visit <https://my.yapp.us/4HEXPO> in your favorite web browser on your device and follow the instructions on the page, or scan the QR code that follows with your device's camera to open the link directly.
2. Install Yapp from the app store (if you don't have it already).



3. Open Yapp and tap “Download an existing Yapp” and the “MI 4-H Expo Days 2024” Yapp will appear.

You can also view most of the app's content from a web browser by clicking on the event graphic in the app's web page.



## 4-H EXPLORATION DAYS June 19-21, 2024

### BUS INFORMATION:

- Shuttle Bus Route
- H Closures for Construction
- 1 - 7 Shuttle Bus Stops (Look for white 4-H flutter flags)
- F Field Trip Loading Site (Not a shuttle bus stop; E-11)

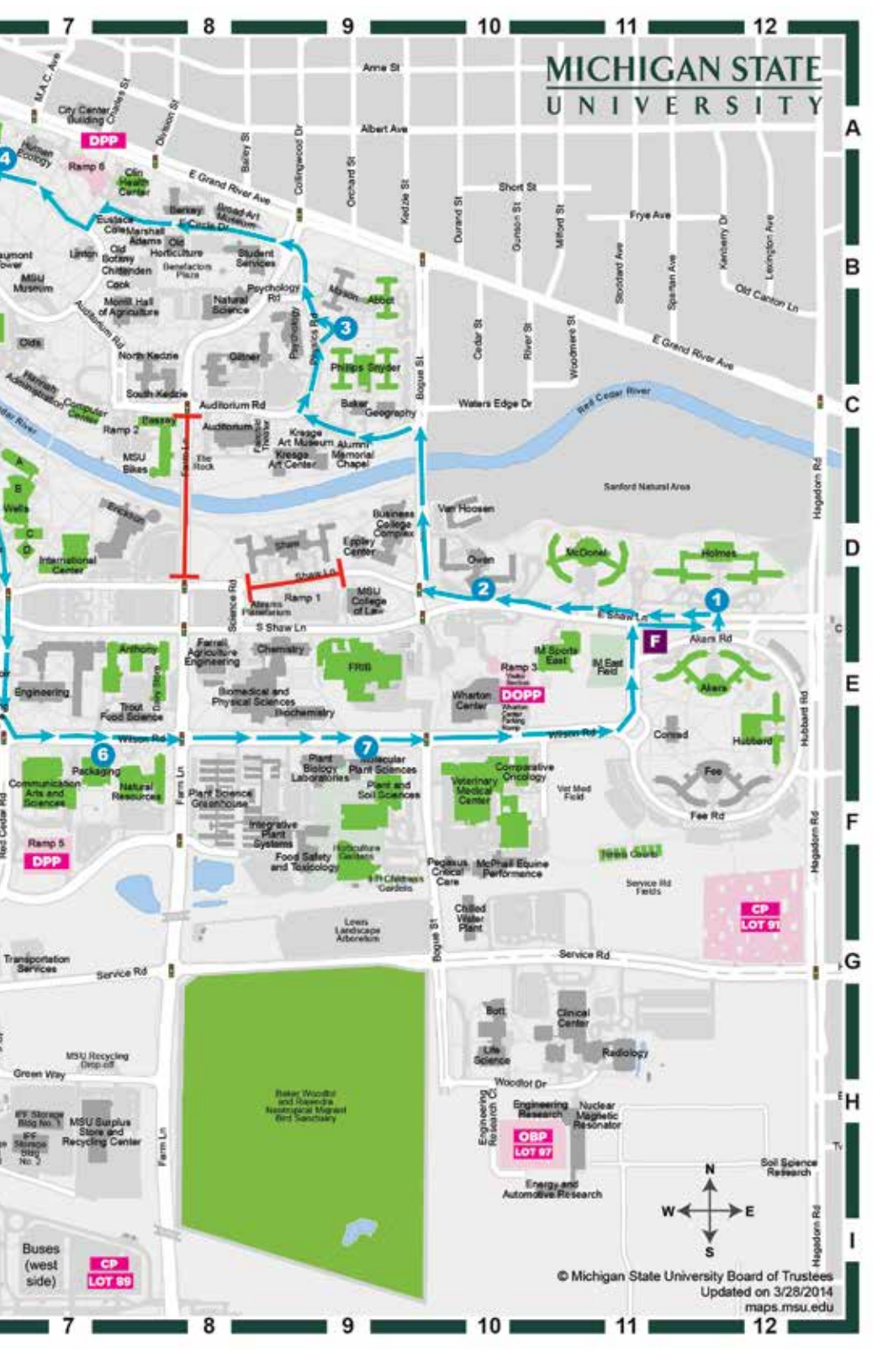
### PARKING INFORMATION:

- CP Complimentary Parking (day & night; no permit or payment required during 4-H Exploration Days)
- DPP Daytime (only) Permit Parking (permit required)
- DOPP Daytime & Overnight Permit Parking (permit required)
- OBP Overnight Bus Parking Lot 97

MSU Campus Areas Used: ■ Buildings ■ Outdoor Areas ■ Parking

Estimated average walking distance within 5 minutes: ← →

# MICHIGAN STATE UNIVERSITY





# Finding Your Sessions

**Using the Map and Index**—The centerfold map and the “Campus Buildings and Features We Use Map Index” will help you get around. The map edges have lines of letters (left and right) and numbers (top and bottom) that create the index coordinates. For example, the index shows that Spartan Stadium is near **D-6** on the map. Find the letter D’s on the map’s sides, then the number 6’s on its top and bottom. Draw an imaginary line between the two letters and another one between the two numbers. You’ll find Spartan Stadium near where those imaginary lines cross on the map.

Use the interactive MSU map at <https://maps.msu.edu/interactive/> to navigate with a smartphone. For example, type “Holmes Hall” into the search box and that building will be highlighted on the map and its address given. You can then use the map’s wayfinding feature to guide you.

**Field Trip Buses**—If your session is going on a field trip, look for the field trip bus loading site on your map. It’s near **D-11** and marked with an **F** in a box. All field trips will leave from this location at the scheduled session starting time. Arrive at the field trip bus loading area 15 to 20 minutes before your session’s scheduled departure time, because once your bus leaves there’s no other way for you to get to your session.

**Shuttle Buses**—Please plan to walk to activities as much as possible. Limited shuttle bus service is provided by MSU buses labeled with bright green “4-H” signs. The centerfold map shows the shuttle route. Shuttle buses stop at the places marked on the map with circled numbers. These are the only places where you can get on and off shuttle buses.

**Remember:** Look for bus designations and window signs that refer to 4-H, and only board 4-H buses.

---

## Shuttle Bus Schedule

**Wednesday:**  
4 p.m. to 9:30 p.m.

**Thursday:**  
7:45 a.m. to 9 a.m.  
11 a.m. to 1:45 p.m.  
4 p.m. to 9:30 p.m.

**Friday:**  
7:45 a.m. to 9 a.m.  
10:45 a.m. to noon

---

# Campus Buildings & Features We Use Map Index

Use this index to find your destinations on the centerfold map. (See the “Finding Your Sessions” section for directions on using the map and index to navigate campus.)

<b>C-9</b> Abbot Hall	<b>D-7</b> International Center (Spartan Bookstore)
<b>E-11</b> Akers Hall	<b>C-7</b> Main Library
<b>E-8</b> Anthony Hall	<b>D-10</b> McDonel Hall
<b>C-6</b> (W. J.) Beal Botanical Garden	<b>G-9</b> Michigan 4-H Children’s Gardens
<b>D-8</b> Bessey Hall	<b>C-8</b> MSU Bikes Service Center
<b>D-8</b> Bikes Service Center, MSU (Bessey Hall)	<b>B-7</b> MSU Union
<b>F-7</b> Communication Arts & Sciences	<b>D-5</b> Munn Ice Arena
<b>C-7</b> Computer Center	<b>F-8</b> Natural Resources
<b>E-8</b> Dairy Store (Anthony Hall)	<b>B-8</b> Olin Health Center
<b>E-9</b> Facility for Rare Isotope Beams (FRIB)	<b>F-7</b> Packaging
<b>E-11</b> Field Trip Loading Site	<b>C-9</b> Phillips-Snyder Hall
<b>D-11</b> Holmes Hall	<b>F-9</b> Plant & Soil Sciences
<b>F-9</b> Horticulture Gardens (Michigan 4-H Children’s Garden)	<b>D-7</b> Spartan Bookstore (International Center)
<b>F-11</b> Hubbard Hall	<b>B-7</b> Spartan Spirit Shop (MSU Union)
<b>E-10</b> IM East Field	<b>B-7</b> Union, MSU
<b>E-10</b> IM Sports East	<b>F-10</b> Veterinary Medical Center
<b>E-10</b> IM Sports East, Tennis Courts	<b>D-7</b> Wells Hall

## Support Michigan 4-H with a donation to the Michigan 4-H Foundation!

**Donate now online ([www.mi4hfdtn.org](http://www.mi4hfdtn.org)) or print the form to mail in your gift!**

### **What your donation does:**

- Supports 4-H learning experiences, workshops, and training.
- Supports your local 4-H program if that is where you designate your gift.
- Supports the continued viability of 4-H in Michigan.

**Whatever your 4-H passion, your gift can help 4-H GROW!**

MICS 2751



# A SESSIONS

**Meet Thursday, June 20, 8:30–11:30 a.m.**

- A-1 Acting Improv**  
Holmes Hall, Rm. C104
- A-2 All About Swine**  
Field Trip (MSU Pavilion, Classroom C)
- A-3 American Sign Language for Beginners: Part 1**  
Holmes Hall, Rm. C103
- A-4 Animal Science Skillathon**  
Anthony Hall, Rm. 1255
- A-5 Archers to the Line!**  
Field Trip (Michigan Trap Association, Mason)
- A-6 Artistic Wooden Blossoms**  
Plant & Soil Sciences, Rm. B109
- A-7 Basic Home Repairs & Maintenance**  
Plant & Soil Sciences, Rm. A186
- A-8 Beat the Clock: 4-H Escape Room**  
Holmes Hall, Rm. C101
- A-9 Beginning Rabbit Raising**  
Field Trip (MSU Pavilion, Classroom B)
- A-10 Beginning Rabbit Showmanship**  
Field Trip (MSU Pavilion, Classroom D)
- A-11 Create Your Own TV Show**  
Communication Arts & Sciences, Rm. 134 Studio E
- A-12 Decreasing Stress With Mindfulness**  
Hubbard Hall, Rm. G28
- A-13 Digital World Art**  
Holmes Hall, Rm. W5
- A-14 Directing on a Diagonal: Communicating Blocking With Technology**  
Bessey Hall, Rm. 107
- A-15 Don't Bite Off More Than You CAN Chew!**  
Field Trip (Martin Luther Chapel, East Lansing)
- A-16 Draft Horse Driving**  
Field Trip (MSU Pavilion, Indoor Arena North End)
- A-17 Earn Your Eagle Eyes**  
Anthony Hall, Rm. 1257
- A-18 Exploring Horticulture at MSU**  
Plant & Soil Sciences, Rm. B102
- A-19 Goats: The Most Versatile Species**  
Hubbard Hall, Rm. G67  
(Community Kitchen)
- A-20 Hunger Fighters Unite**  
Anthony Hall, Rm. 1222
- A-21 Jazz Dance**  
IM Sports East, Multipurpose Rms. A & B
- A-23 Mixing Magic: Crafting Natural Plant Syrups for Mixology & Cultivating a Garden of Flavor**  
McDonel Hall, Rm. 45A  
Community Kitchen (basement)
- A-24 Outdoor Environmental Education & More**  
Field Trip (Michigan Trap Association, Mason)
- A-25 Personal Leadership Journey**  
McDonel Hall, Rm. C107 (Kiva)
- A-26 Pickleball: Learn to Play**  
IM Sports East, Tennis Courts  
(rain backup: IM Sports East, Rear Gym)
- A-27 Raindrops: An Environmental Science & Art Project**  
Plant & Soil Sciences, Rm. A158



**A-28 Ready! Set! Pull!**

Field Trip (Michigan Trap Association, Mason)

**A-29 Run for Your Life**

Wells Hall, Rm. A132 (rain backup: IM Sports East, Indoor Track)

**A-30 Savor Latin American Cultures**

Abbot Hall, Rm. C114 (Community Kitchen)

**A-31 Savvy Animal Science**

Akers Hall, Rm. C139

**A-32 Sewing Machines & Sewing for Beginners**

Akers Hall, Rm. C133

**A-33 Slam Dunk Your Way to Better Basketball Skills: Ages 15 to 19**

IM Sports East, East Gym

**A-34 Tour de MSU**

Bessey Hall, Rm. B10, MSU Bikes Service Center (rain backup: Bessey Hall, Rm. 106)

**A-35 Veterinary Nurse for a Day**

Veterinary Medical Center, E100 (Lobby; enter west corner E100 entrance from corner of Bogue St and Wilson Rd)

**A-36 Vinyl Creations**

Hubbard Hall, Rm. 132

**A-37 Writing**

Bessey Hall, Rm. 111

**A-38 You've Gotta Be Goating Me!**

Field Trip (MSU Pavilion, Classroom A)

## B SESSIONS

**Meet Thursday, June 20, 1:30–4:30 p.m.****B-1 Archers to the Line!**

Field Trip (Michigan Trap Association, Mason)

**B-2 Artistic Wooden Blossoms**

Plant & Soil Sciences, Rm. B109

**B-3 Band Together**

McDonel Hall, Rm. C107 (Kiva)

**B-4 Basic Home Repairs & Maintenance**

Plant & Soil Sciences, Rm. A186

**B-5 Beat the Competition**

Field Trip (MSU Beef Cattle Teaching & Research Center)

**B-7 Cookies & Cupcakes**

Field Trip (Martin Luther Chapel, East Lansing)

**B-8 Create Your Own TV Show**

Communication Arts & Sciences, Rm. 134 Studio E

**B-9 Directing on a Diagonal: Communicating Blocking With Technology**

Bessey Hall, Rm. 107

**B-10 Draft Horse Fitting & Showing**

Field Trip (MSU Pavilion, Indoor Arena North End)

**B-11 Earn Your Eagle Eyes**

Anthony Hall, Rm. 1257

**B-12 Feathered Flock of Friends**

Anthony Hall, Rm. 1222

**B-13 Fun & Games: Activities for Everyone**

Holmes Hall, Rm. C104

**B-14 Goats: The Most Versatile Species**

Hubbard Hall, Rm. G67 (Community Kitchen)

**B-15 Good Vibes Only**

Hubbard Hall, Rm. G28

- B-16 Laser Cutting**  
Hubbard Hall, Rm. 132
- B-17 Mastering Rabbit Showmanship**  
Field Trip (MSU Pavilion, Classroom B)
- B-18 Mixing Magic: Crafting Natural Plant Syrups for Mixology & Cultivating a Garden of Flavor**  
McDonel Hall, Rm. 45A  
Community Kitchen (basement)
- B-19 Nothing Up My Sleeve With Magic & Illusions**  
Plant & Soil Sciences, Rm. A159
- B-20 Orange, Blue, Green, Gold: What Are You?**  
Hubbard Hall, Rm. G29
- B-21 Outdoor Environmental Education & More**  
Field Trip (Michigan Trap Association, Mason)
- B-22 Pickleball: Learn to Play**  
IM Sports East, Tennis Courts (rain backup: IM Sports East, Rear Gym)
- B-23 Quilled Wall Hangings**  
Akers Hall, Rm. C134
- B-24 Raising 4-H Beef Projects**  
Field Trip (MSU Beef Cattle Teaching & Research Center)
- B-25 Ready! Set! Pull!**  
Field Trip (Michigan Trap Association, Mason)
- B-26 Run for Your Life**  
Wells Hall, Rm. A132 (rain backup: IM Sports East, Indoor Track)
- B-27 Savor Latin American Cultures**  
Abbot Hall, Rm. C114 (Community Kitchen)
- B-28 Savvy Animal Science**  
Akers Hall, Rm. C139
- B-29 Sewing Machines & Sewing for Beginners**  
Akers Hall, Rm. C133
- B-30 Slam Dunk Your Way to Better Basketball Skills: Ages 12 to 15**  
IM Sports East, East Gym
- B-31 Spartan Dollars & Sense: A Budgeting Challenge**  
Hubbard Hall, Rm. G31
- B-33 Tour de MSU**  
Bessey Hall, Rm. B10, MSU Bikes Service Center (rain backup: Bessey Hall, Rm. 106)
- B-34 Vegetables 101**  
Plant & Soil Sciences, Rm. A166
- B-35 Vinyl Design on an Electronic Cutting Machine**  
Akers Hall, Rm. C135
- B-36 What's the Buzz?**  
Field Trip (MSU Pollinator Performance Center)
- B-37 Writing**  
Bessey Hall, Rm. 111
- B-38 You've Gotta Be Goating Me!**  
Field Trip (MSU Pavilion, Classroom A)

# C SESSIONS

**Meet Thursday, June 20,  
8:30–11:30 a.m. & 1:30–4:30 p.m.**

- C-1 Build Your Own Fishing Rod**  
Natural Resources, Rm 152
- C-3 Early Childhood Education:  
Keeping Kids Engaged  
& Having Fun**  
Phillips-Snyder Hall, Rm. C302
- C-4 Finding Fun in Your Family Tree**  
Main Library, Red Cedar West  
(Second Floor West; ask for  
directions at Circulation Desk on  
first floor)

- C-5 Lap Quilts**  
Phillips-Snyder Hall, Rm. C304
- C-6 Pellet Rifle & Air Pistol Target  
Shooting Fundamentals**  
Field Trip (Michigan Trap  
Association, Mason)
- C-8 Working With Search  
& Rescue K-9s**  
Field Trip (MSU Pavilion, South  
Barn)

# D SESSIONS

**Meet Friday, June 21, 8:30–11 a.m.**

- D-1 100% Cocoa**  
Plant & Soil Sciences, Rm. B109
- D-2 Acting Improv**  
Holmes Hall, Rm. C104
- D-3 American Sign Language  
for Beginners: Part 2**  
Holmes Hall, Rm. C103
- D-4 Band Together**  
McDonel Hall, Rm. C107 (Kiva)
- D-5 Building Community With  
Community Service-Learning**  
Anthony Hall, Rm. 1235
- D-6 Cookies & Cupcakes**  
Field Trip (Martin Luther Chapel,  
East Lansing)
- D-7 Create Your Own TV Show**  
Communication Arts & Sciences,  
Rm. 134 Studio E
- D-8 Creative Soap Making**  
McDonel Hall, Rm. 45A  
Community Kitchen (basement)
- D-9 Dairy Cattle Practices 201**  
Field Trip (MSU Pavilion,  
Classroom A)
- D-10 Digital World Art**  
Holmes Hall, Rm. W5
- D-11 Earn Your Eagle Eyes**  
Anthony Hall, Rm. 1257
- D-12 Everyone Can Code**  
McDonel Hall, Rm. B42
- D-13 Farm Livin' Is the Life for Me!**  
Phillips-Snyder Hall, Rm. C302
- D-14 Finding the Sparkle in Every  
Moment**  
Hubbard Hall, Rm. G32
- D-15 Five P's of Marketing Your  
Livestock Project**  
Holmes Hall, Rm. C102
- D-16 Goats: The Most Versatile Species**  
Hubbard Hall, Rm. G67  
(Community Kitchen)
- D-17 Good Vibes Only**  
Hubbard Hall, Rm. G28

- D-18 If You Can Vision Board It, You Can Do It!**  
Hubbard Hall, Rm. G29
- D-19 Introduction to Pellet Rifle**  
Field Trip (Michigan Trap Association, Mason)
- D-20 Jazz Dance**  
IM Sports East, Multipurpose Rms. A & B
- D-21 Kindness: Making Positive Change Locally & Globally**  
Hubbard Hall, Rm. G31
- D-22 Mask Design Around the World**  
Akers Hall, Rm. C134
- D-23 Nature's Art**  
Field Trip (Baker Woodlot) & Plant & Soil Sciences, Rm. A159 (after field trip)
- D-24 Packaging Science**  
Packaging, Rm. 100
- D-25 Piecing Together the Apprenticeship Puzzle**  
Anthony Hall, Rm. 1222
- D-26 Rabbit Color Genetics**  
Field Trip (MSU Pavilion, Classroom B)
- D-27 Rainbow Unicorn Ninja Warriors**  
Akers Hall, Rm. C135
- D-28 Ready! Set! Pull!**  
Field Trip (Michigan Trap Association, Mason)
- D-29 Reality Farm**  
Hubbard Hall, Rm. 128
- D-30 Run for Your Life**  
Wells Hall, Rm. A132 (rain backup: IM Sports East, Indoor Track)
- D-31 Savvy Animal Science**  
Akers Hall, Rm. C139
- D-32 Sewing Machines & Basic Stitches 101**  
Akers Hall, Rm. C138
- D-33 Sewing Machines & Sewing for Beginners**  
Akers Hall, Rm. C133
- D-34 Stop-Motion Animation Challenge**  
Hubbard Hall, Rm. G30
- D-35 Super Collisions of Atomic Nuclei**  
Facility for Rare Isotope Beams lobby (enter NW corner of building from S. Shaw Lane, next to Chemistry Building)
- D-36 Surviving the Zombie Apocalypse**  
Holmes Hall, Rm. W9
- D-37 Venture to Adventure: Careers in Nature**  
Holmes Hall, Rm. C106 (Auditorium)
- D-38 Veterinary Nurse for a Day**  
Veterinary Medical Center, E100 (lobby; enter west corner E100 entrance from corner of Bogue St and Wilson Rd)
- D-39 Virus Among Us**  
Holmes Hall, Rm. C101
- D-40 Watercolor Painting for Beginners**  
Plant & Soil Sciences, Rm. A158
- D-41 Writing**  
Bessey Hall, Rm. 111
- D-42 Youth for the Quality Care of Animals**  
Anthony Hall, Rm. 1260
- D-43 Youth Take the Stage: An Introduction to Interactive Theater**  
Akers Hall, Rm. 137 (Auditorium)

# GENERAL INFORMATION

## PLEASE READ CAREFULLY

**1. Staying in a Residence Hall**—When you check in at Holmes Hall, you'll receive a room key and a conference card that serves as your meal card and lets you enter your housing floor stairwell and elevators. Linens will be in your room. Blankets are available in your closet or on request. Lock your room each time you leave and keep your key and conference card with you at all times.

**2. Youth-Chaperone Assignments & Whereabouts Schedules**—All youth participants must be assigned to a specific adult chaperone. You must attend all sessions for which you are registered, and your attendance will be monitored. During free time, youth participants and the assigned adult chaperone need to keep each other informed of where they will be, when, and with whom. All chaperones will create a system to ensure all parties know where everyone is. (The system could be using whereabouts schedules, group texting, or another method.)

**3. Youth-Chaperone Meetings**—In addition to the county meeting you'll have shortly after arriving at 4-H Exploration Days, you'll have four youth-chaperone meetings throughout the event. These mandatory meetings will give you a chance to check in with your chaperone after sessions, before and after evening activities, and before bedtime. While counties may adjust the times of the meetings slightly, the official times are:

- Wednesday: 10:15 a.m.–noon, 5:30–7 p.m., & 10:15–11 p.m. (You must stay on your floor after the final meeting.)

- Thursday: 5–7 p.m. & 10:15–11 p.m. (You must stay on your floor after the final meeting.)

**4. Hosts**—Session and activity hosts will provide extra support and help as needed. You can identify the hosts by their green 4-H vests.

**5. Name Badges**—You must wear your lanyard and name badge at all times during the conference. Your name badge will admit you to campus activities and identify you as a participant in 4-H Exploration Days.

**6. Bed Check**—Your lead chaperone will do a bed check each night. You must be in your assigned room no later than 11 p.m. and must sleep in your assigned room. Under no circumstances may you move without first obtaining permission from your lead chaperone or county staff member. Keep the blinds closed when the lights are on in your room in the evening.

**7. 4-H Exploration Days Information Center**—This office is in W179 Holmes Hall (phone number will be posted in Holmes Hall and on the Yapp app). The center is open from 7 a.m. to midnight.

**8. Headquarters**—4-H Exploration Days Headquarters is in the West Holmes Hall Lounge (phone 517-432-7611). Headquarters is staffed from 7 a.m. to midnight. on Wednesday and Thursday and from 7 a.m. to 2:30 p.m. on Friday. If you need help during the night, contact the West Holmes desk receptionist (phone 517-353-6360), who will connect you with the 4-H Exploration Days leadership team.

**9. Nurse's Station**—The Nurse's Station is in apartment E-195 Holmes Hall (phone number will be posted in Holmes Hall and on the Yapp app). The Nurse's Station is staffed from 9 a.m. on Wednesday until 1:30 p.m. on Friday. If you get sick or hurt, tell your lead chaperone and county staff, then report to the nurse. If you need more care you will be taken to:

- **MSU Olin Health Center**—for those aged 14 and up only (8 a.m. to 5 p.m.).
- **Area medical facility**—The nurse, 4-H Information Center, and 4-H Exploration Days Headquarters in the West Holmes Hall Lounge have contact information and maps.

Victims of life-threatening situations will be taken directly to Sparrow Hospital in Lansing. Phone 911 for an ambulance, then notify your county 4-H staff, lead or assigned chaperone, and 4-H Exploration Days Headquarters in the West Holmes Hall Lounge (517-432-7611). Emergency transportation is always available from Headquarters.

You or your parents or guardian will be billed for the cost of hospital treatment.

**10. Cafeteria**—Everyone will eat in the Akers Hall Cafeteria. Please enter from the West Akers side. The facility is accessible to people with disabilities.

**11. Phone Calls**—There are no land lines in the housing rooms and no pay phones in Holmes Hall.

**12. Check-Out Procedures & Times**—Check-out is from 11 a.m. to 1:30 p.m. on Friday. All rooms are to be vacated by 1:30 p.m.

- Lock your door when leaving the room.
- Place your sheets and towels in the designated bins by the elevator on your floor.
- Collect any trash from your room and place it in the county trash bag by the elevator on your floor.
- Turn in your key and conference card to your lead chaperone. You'll be billed \$75 for a missing key and \$15 for a missing card.
- If you need to wait for a ride, check out and wait in the lobby area of Holmes Hall. The hall will be closed and locked at 2 p.m.

**13. Conduct Policy Reminder**—You agreed to abide by a code of conduct when you enrolled in 4-H, and to abide by the event rules when you registered. Both the code of conduct and the event rules are available in 4-H Exploration Days Headquarters in the West Holmes Hall Lounge. Several key points follow: Theft, vandalism, the use of alcohol and illegal drugs, and leaving the premises (except for session field trips) are not permitted. Violators will immediately be sent home at their own expense and may not be allowed to attend future 4-H Exploration Days. Those engaged in illegal activities will be turned over to the proper authorities. Repair costs for property damage will be billed to the group or individual responsible for it.

I can't wait for . . .



**2025 4-H  
EXPLORATION DAYS!**

June 18 to 20, 2025

See you there!



# Emergency Procedures

## If you spot a FIRE:

Set off an alarm. Call 911 and report the location of the fire. Leave the building calmly and quietly. Do not use the elevator. (Conference assistants will direct the evacuation.) Once you reach a safe place, notify 4-H Exploration Days Headquarters at 517-432-7611.

**(NOTE:** The silver decals on the back of your housing room door give more information on fire procedures.)

## If there is a SEVERE THUNDERSTORM or TORNADO WARNING:

In a weather emergency, a steady signal of varying volume means TAKE COVER NOW! Move to an interior hallway (in the basement or on the ground level is best) with no windows or other hazards, or to the lowest level of a parking ramp. Stay under cover until the “all clear” signal is given by the MSU Alert System or the Yapp app.

## If there is another EMERGENCY:

In another type of emergency (accident, illness, suspicious activity, or threat of violence), call 911 immediately. If you are told to secure in place:

- Lock the doors of the room you are in. (The main doors of the building will also be locked.)
- Close the blinds or curtains and turn off the lights.
- Hide in a protected area. Build a barricade with or hide behind objects in the room.
- Stay under cover until the “all clear” signal is given by the MSU Alert System or the Yapp app.

**MICHIGAN STATE**  
UNIVERSITY

Extension

Michigan 4-H Youth Development programs involve volunteers in providing positive, experiential, educational opportunities for and with youth. Our mission is to create environments, through collaboration, that build strong, healthy youth who are proactive in a complex and changing world.

MSU is an affirmative-action, equal-opportunity employer, committed to achieving excellence through a diverse workforce and inclusive culture that encourages all people to reach their full potential. Michigan State University Extension programs and materials are open to all without regard to race, color, national origin, gender, gender identity, religion, age, height, weight, disability, political beliefs, sexual orientation, marital status, family status, or veteran status. Issued in furtherance of MSU Extension work, acts of May 8 and June 30, 1914, in cooperation with the U.S. Department of Agriculture. Quentin Tyler, Director, MSU Extension, East Lansing, MI 48824. This information is for educational purposes only. Reference to commercial products or trade names does not imply endorsement by MSU Extension or bias against those not mentioned. The 4-H name and emblem have special protections from Congress, protected by Title 18 U.S.C. 707. Produced for MSU Extension ([www.extension.msu.edu](http://www.extension.msu.edu)) by the MSU Extension Educational Materials Team. 1P-1,100-06:2024-PRINT/WEB-BP-RM/LG WCAG 2.0 AA



HANDS

HEART

HEAD

HEALTH



# 4-H YOUTH DEVELOPMENT

MICHIGAN STATE UNIVERSITY

MICHIGAN STATE UNIVERSITY | Extension